

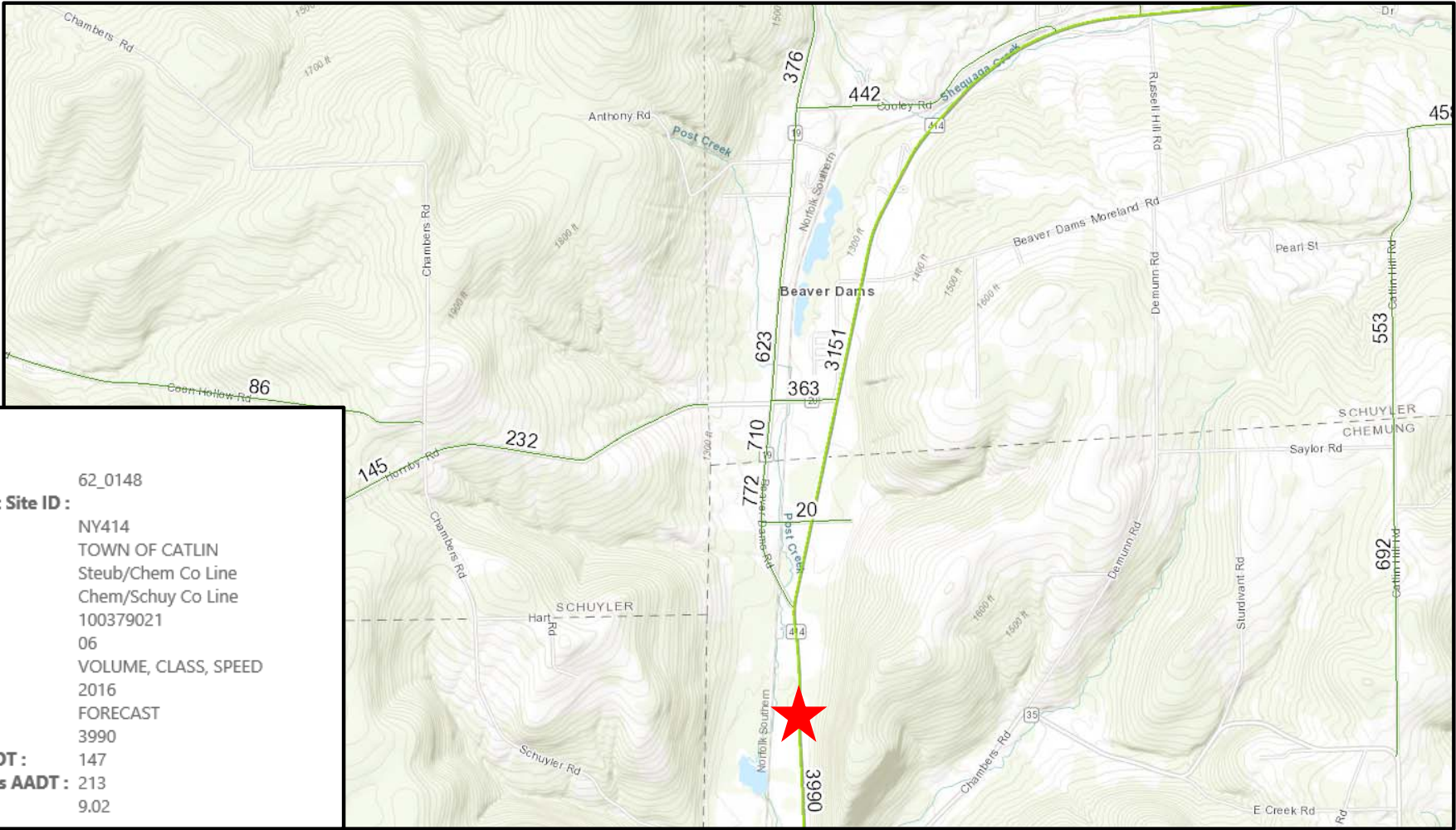
APPENDIX 25-3

NYSDOT AVERAGE ANNUAL DAILY TRAFFIC (AADT) VOLUMES



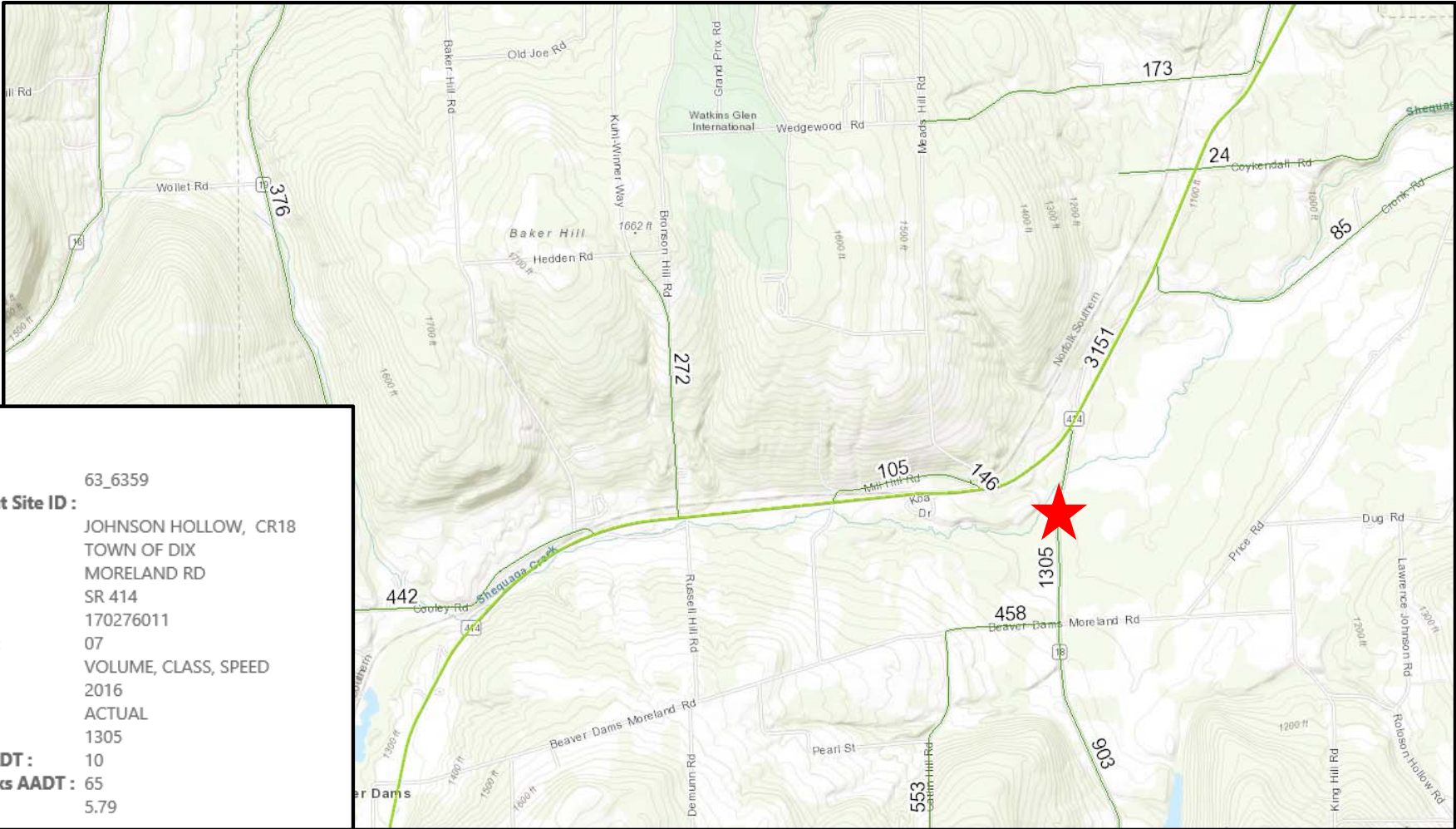
**Location B: NY 414 (Town of Catlin)**

<b>Station ID :</b>	62_0148
<b>Continuous Count Site ID :</b>	
<b>Roadway Name:</b>	NY414
<b>Municipality :</b>	TOWN OF CATLIN
<b>Station Start :</b>	Steub/Chem Co Line
<b>Station End :</b>	Chem/Schuy Co Line
<b>GIS ID :</b>	100379021
<b>Functional Class :</b>	06
<b>Data Available:</b>	VOLUME, CLASS, SPEED
<b>Count Year :</b>	2016
<b>Count Type :</b>	FORECAST
<b>AADT :</b>	3990
<b>Trailer Trucks AADT :</b>	147
<b>Non-Trailer Trucks AADT :</b>	213
<b>Percent Trucks :</b>	9.02

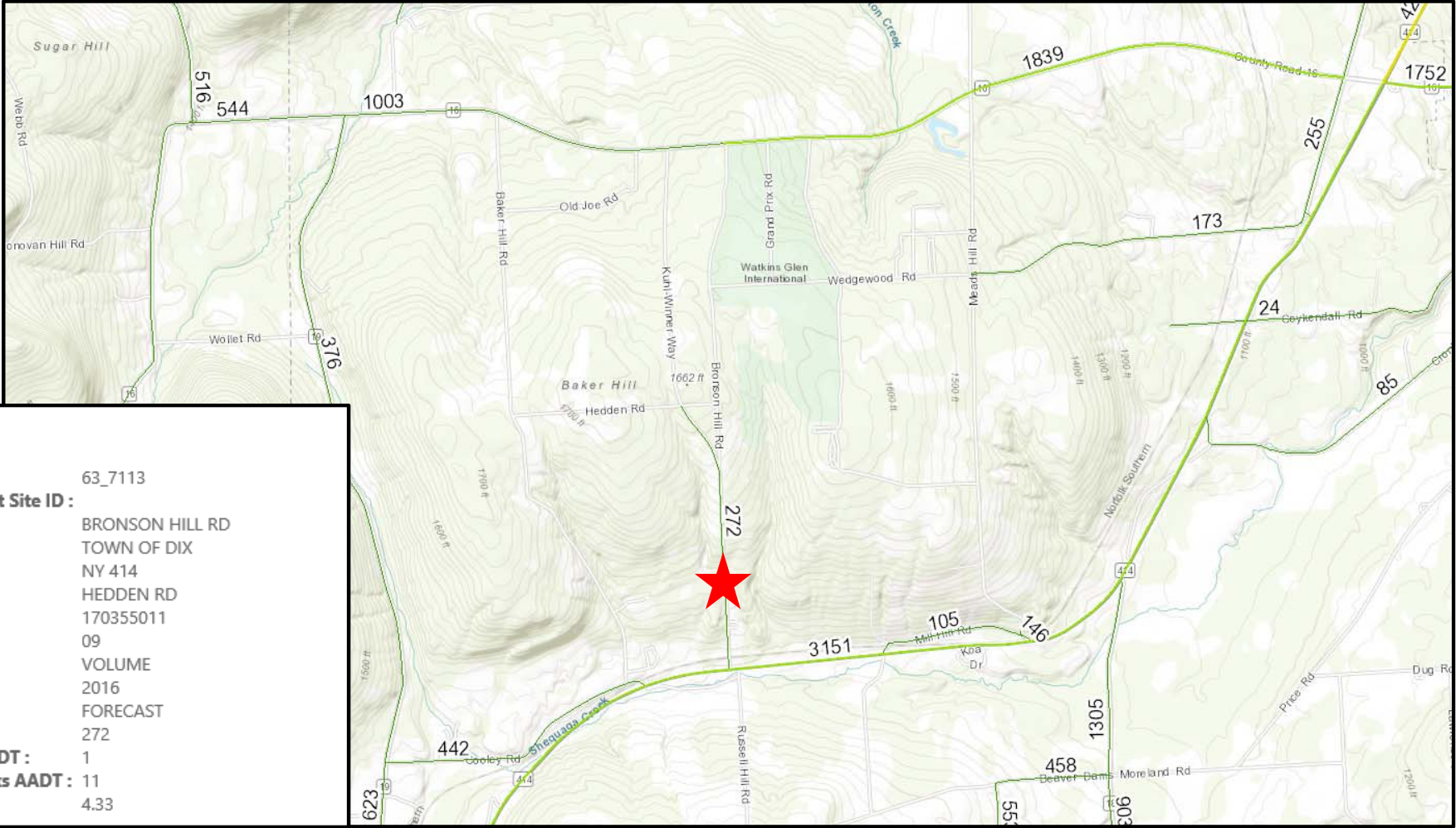


**Location C: Johnson Hollow Road, CR 18 (Town of Dix)**

<b>Station ID :</b>	63_6359
<b>Continuous Count Site ID :</b>	
<b>Roadway Name:</b>	JOHNSON HOLLOW, CR18
<b>Municipality :</b>	TOWN OF DIX
<b>Station Start :</b>	MORELAND RD
<b>Station End :</b>	SR 414
<b>GIS ID :</b>	170276011
<b>Functional Class :</b>	07
<b>Data Available:</b>	VOLUME, CLASS, SPEED
<b>Count Year :</b>	2016
<b>Count Type :</b>	ACTUAL
<b>AADT :</b>	1305
<b>Trailer Trucks AADT :</b>	10
<b>Non-Trailer Trucks AADT :</b>	65
<b>Percent Trucks :</b>	5.79

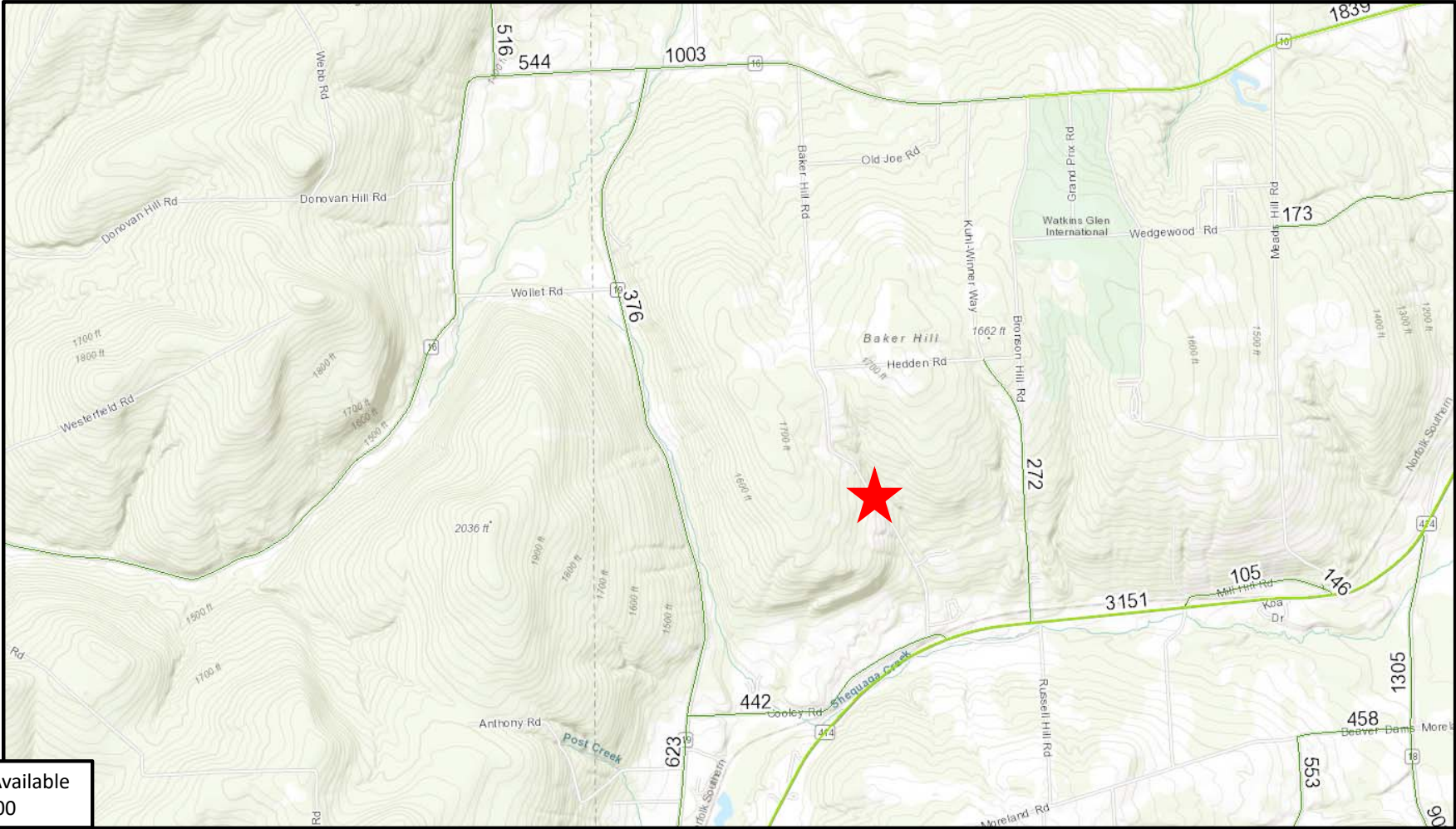


**Location D: Bronson Hill Road (Town of Dix)**



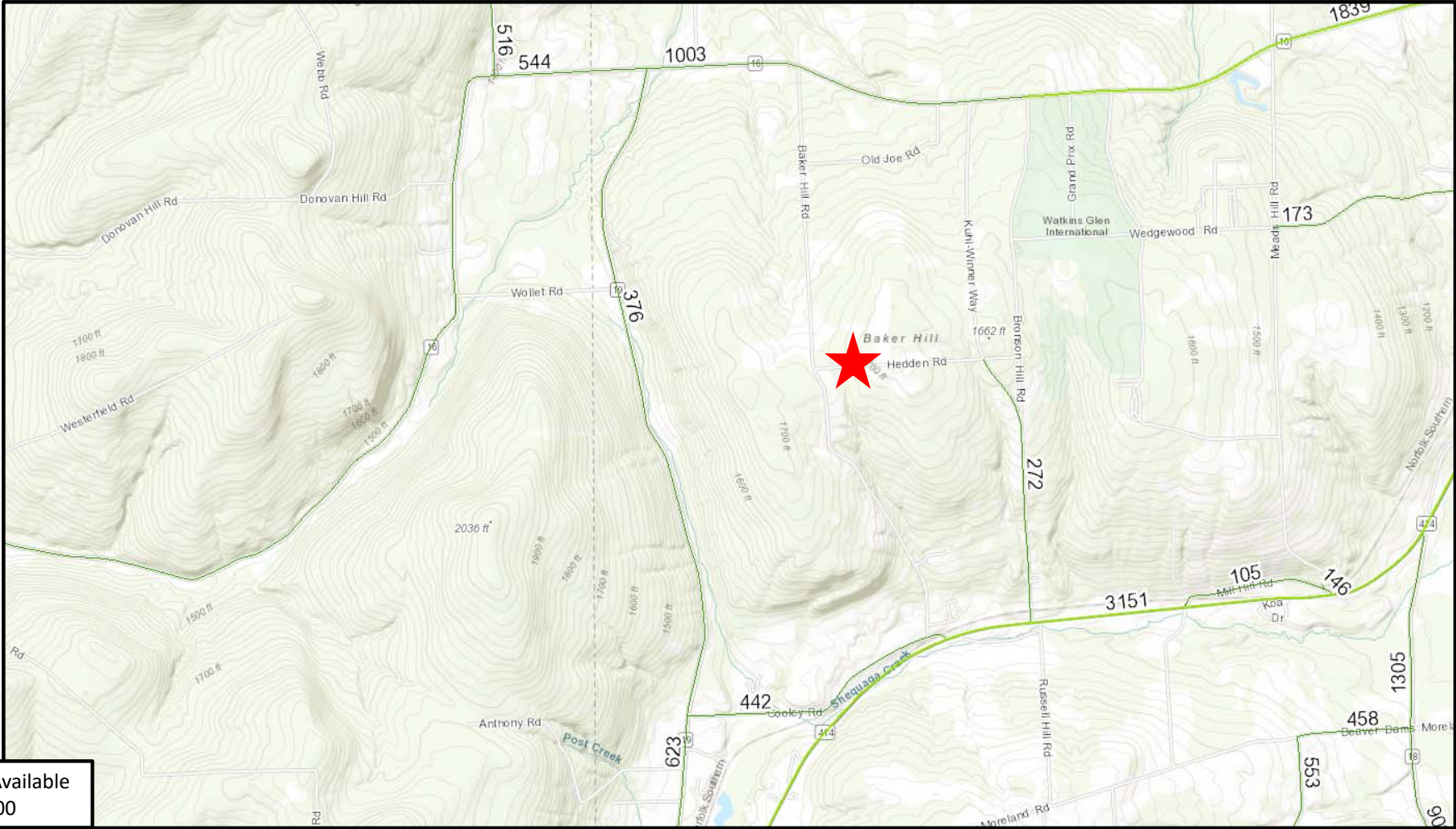
<b>Station ID :</b>	63_7113
<b>Continuous Count Site ID :</b>	
<b>Roadway Name:</b>	BRONSON HILL RD
<b>Municipality :</b>	TOWN OF DIX
<b>Station Start :</b>	NY 414
<b>Station End :</b>	HEDDEN RD
<b>GIS ID :</b>	170355011
<b>Functional Class :</b>	09
<b>Data Available:</b>	VOLUME
<b>Count Year :</b>	2016
<b>Count Type :</b>	FORECAST
<b>AADT :</b>	272
<b>Trailer Trucks AADT :</b>	1
<b>Non-Trailer Trucks AADT :</b>	11
<b>Percent Trucks :</b>	4.33

**Location E: Baker Hill Road (Town of Dix)**



No Traffic Data Available  
Use an AADT: 300

**Location F: Hedden Road (Town of Dix)**



No Traffic Data Available  
Use an AADT: 300

**Location G: Montour Townsend Road, CR 16 (Town of Dix)**

